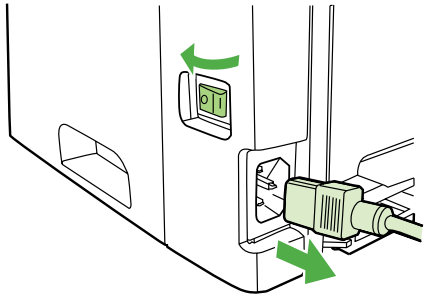


# Installation Guide

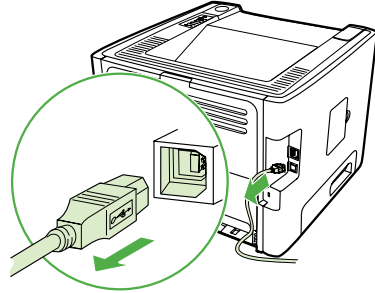
For HP LaserJets & MFPs with Compact Flash

Extending the Resources and Abilities of Your Printer



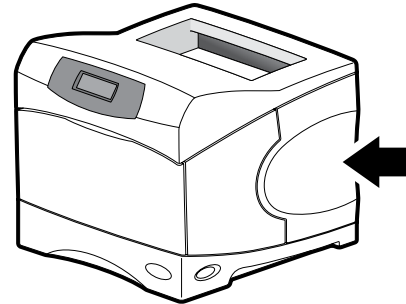
1

Use the power switch to turn off the printer and then unplug the power cord from the printer.



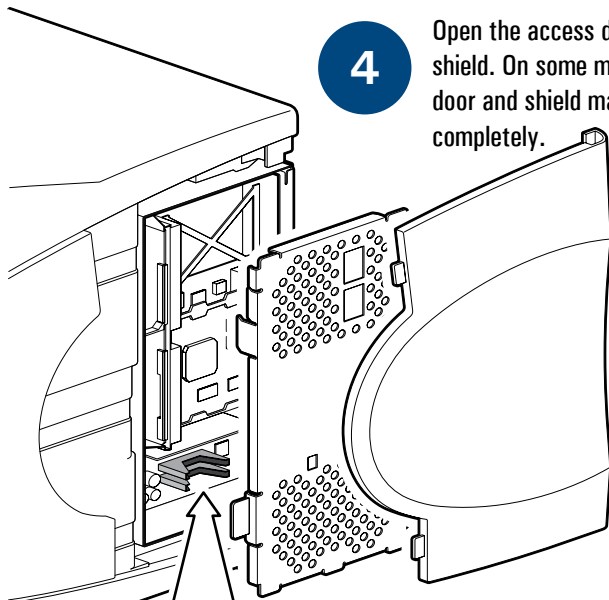
2

Unplug all remaining cables and cords from the printer.



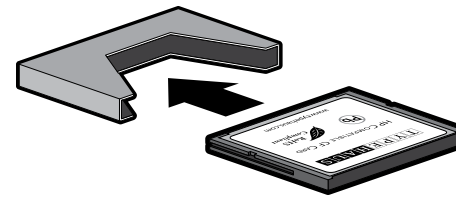
3

Locate the access door located on the side of the printer. The location can vary by model.



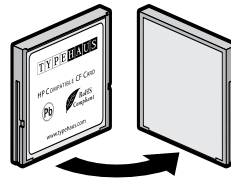
4

Open the access door and metal shield. On some models the door and shield may remove completely.



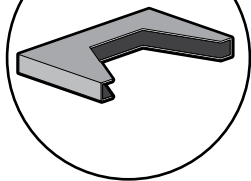
6

Insert the Custom Solution into any open CF connector. Do not remove any existing CF cards. The card will only insert in one orientation. If it does not slide easily, rotate it and try again. A very small amount of extra pressure will be necessary at the very end to make sure the card is completely plugged into the short pins at the base of the connector. Never use strong force. Strong force may damage your printer.



5

Locate the compact flash (CF) connectors. The number of CF connectors, and the location and orientation can vary by model.



7

Close the shield and access door, reconnect all cables and cords, then turn the power switch on.

## Congratulations!

You are now ready to print using your custom solution. See the reverse side of this sheet for a sample test print using your custom solution.

TypeHaus Reorder Part Number: 11B581-50

Solutions Business Partner



TypeHaus, Inc.  
655 Second Street  
Encinitas, CA 92024  
760.334.3555  
www.typehaus.com

