

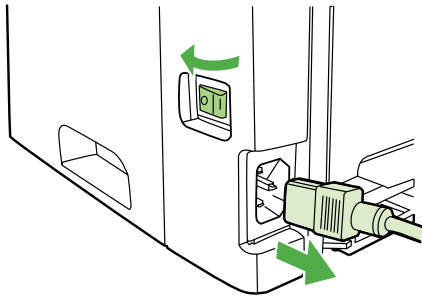
BarCodes Complete

Installation & Test Guide

For HP LaserJets & MFPs with Compact Flash

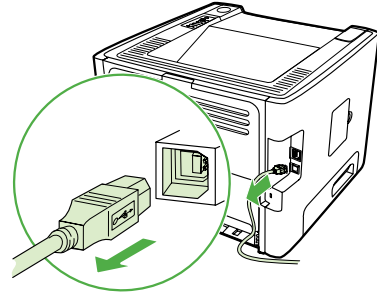
TYPEHAUS

Extending the Resources and Abilities of Your Printer



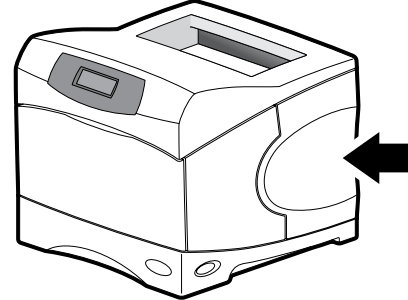
1

Use the power switch to turn off the printer and then unplug the power cord from the printer.



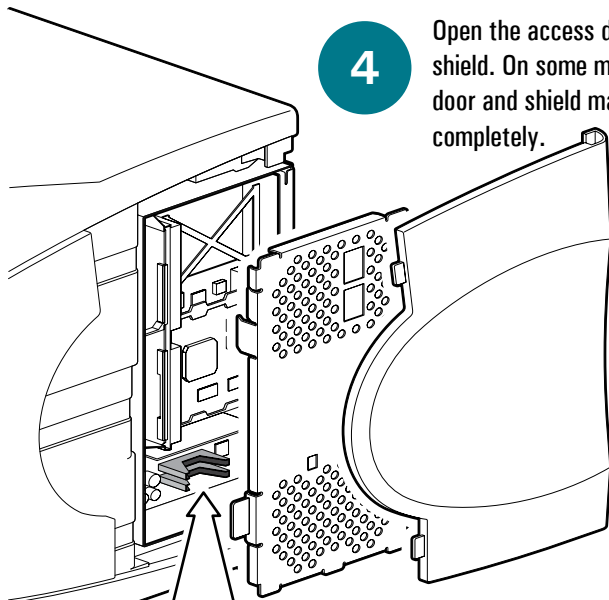
2

Unplug all remaining cables and cords from the printer.



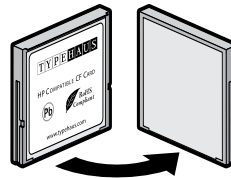
3

Locate the access door located on the side of the printer. The location can vary by model.



4

Open the access door and metal shield. On some models the door and shield may remove completely.



6

Insert the BarCodes Complete into any open CF connector. Do not remove any existing CF cards. The card will only insert in one orientation. If it does not slide easily, rotate it and try again. A very small amount of extra pressure will be necessary at the very end to make sure the card is completely plugged into the short pins at the base of the connector. Never use strong force. Strong force may damage your printer.

5

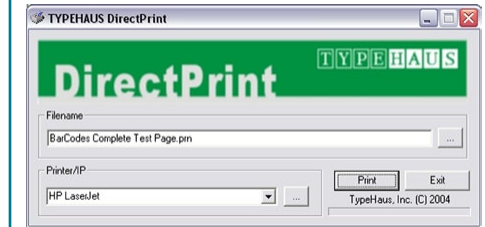
Locate the compact flash (CF) connectors. The number of CF connectors, and the location and orientation can vary by model.

7

Close the shield and access door, reconnect all cables and cords, then turn the power switch on.

Congratulations!

You are now ready to print bar codes using your LaserJet. The CD that came with your BarCodes Complete contains an application for testing the new capabilities.



1. Insert the CD in your CD/DVD drive and use Windows File Explorer to browse the CD and double-click on DirectPrint.exe.
2. In the "Filename" section, click the "... " button. Browse to select the file "BarCodes Complete Test Page.prn" also located on the CD.
3. In the "Printer/IP" section, select the printer from the dropdown list or enter the IP address if it is attached to the network.
4. Select the "Print" button.
5. Compare the printed test page to the reverse side of these instructions.
6. Select the "Exit" button to close the application.

TypeHaus Reorder Part Number: 11B521-00

Solutions
Business Partner



TypeHaus, Inc.
655 Second Street
Encinitas, CA 92024
760.334.3555
www.typehaus.com

© 2010 TypeHaus, Inc. All rights reserved. (3554-100830A)

BarCodes Complete

Test Page

TYPEHAUS

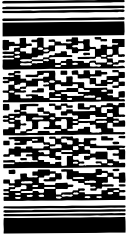
Extending the Resources and Abilities of Your Printer

MSI Plessey

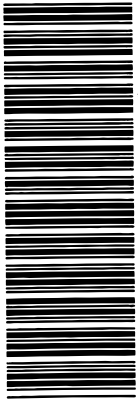
987654



PDF417



Code 39



012ABC8901

UPC-A



012345 67890 15

Code 128 Auto A/B/C



Code 25 Industrial



012345678901

EAN-13



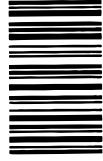
0123456 789012

EAN-8



1234156701

Code 128C



12345678

© 2009 TypeHaus, Inc.
All rights reserved.
(3545-09022 1A)