

Installation

1

Preparing for Success

Before installing the BarCodeJet®, follow the printer manufacturer's instructions for installing the printer on the network. Confirm that a page can be printed from the system that will be used for barcode printing.

Each printer model is unique. The printer manufacturer's instructions, web site, and customer support always provide the best printer installation assistance prior to installing the BarCodeJet.

The BarCodeJet requires a PCL5/5e print stream. If using Windows, select the printer's Windows PCL5/5e driver. If there is no option to specify a driver, or if the printer is already installed, confirm the driver in use is a PCL5/5e driver.

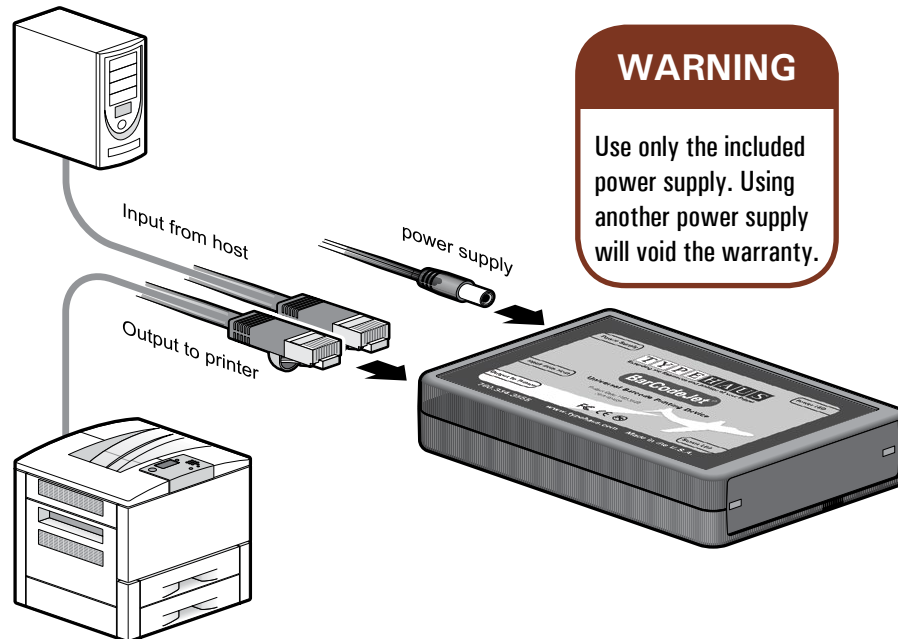
If needed, a Windows PCL5/5e driver can normally be found on the printer manufacturer's web site or printer CD. To install a manufacturer supplied driver, follow the manufacturer's instructions for the driver.

2

Installing the BarCodeJet

Be sure to install and test the printer on the network before proceeding.

Power on the laser printer and wait for ready/online status.



3

Detach the Ethernet network cable from the printer and attach it to the "Input from Host" port on the BarCodeJet.

4

Attach the supplied 3 foot Ethernet cable to the printer's Ethernet port (the same port from which the network cable was detached in the previous step).

5

Attach the other end of the supplied 3 foot Ethernet cable to the "Output to Printer" port on the BarCodeJet.

6

Plug the supplied 5 volt power supply into a 110 volt outlet. It is preferable, but not required, to plug it into the same power strip as the printer. See **WARNING** box on this page.

7

Insert the round power supply connector into the BarCodeJet "Power Supply" port. The BarCodeJet Power LED will light green (possibly after blinking orange), then the Status LED will light green.

8

Congratulations!

You are now ready to print barcodes using your BarCodeJet. To test your BarCodeJet, see the reverse side of these instructions.

TypeHaus, Inc.
655 Second Street
Encinitas, CA 92024
760.334.3555

Select option 2 for support.

TypeHaus Reorder Part Number 11B528-00

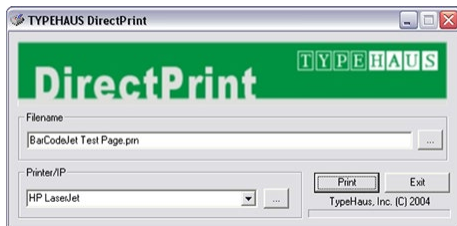
© 2013 TypeHaus, Inc. All rights reserved. (3050-130401A)
BarCodeJet is a registered trademark of TypeHaus, Inc.

Congratulations!

You are now ready to print barcodes using your BarCodeJet. If you wish to test your BarCodeJet, the TypeHaus web site has a Windows testing tool available for download. Take your browser to:

<http://www.typehaus.com>

then select Support ⇒ Downloads ⇒ Bar-CodeJet (External). Download the TypeHaus DirectPrint utility and the BarCodeJet Test Page.



1. After downloading both files to your system, double click on DirectPrint.exe.
2. In the "Filename" section, click the "..." button. Browse to select the file "Bar-CodeJet Test Page.prn" you downloaded.
3. In the "Printer/IP" section, select the printer from the dropdown list or enter the IP address if it is attached to the network.
4. Select the "Print" button.
5. Compare the printed test page to the sample shown to the right.
6. Select the "Exit" button to close the application.

BarCodeJet Test Page Sample

BarCodeJet

Test Page

Extending the Resources and Abilities of Your Printer

MSI Plessey

987654

PDF417

Code 39

012ABC8901

UPC-A

0 12345 67890 15

Code 128 Auto A/B/C

☺ ☹ ♥ ♦ ♣ ♠ ♂ abCDE

Code 25 Industrial

012345678901

EAN-13

0 123456 789012

EAN-8

1234 5670

Code 128C

12345678

© 2008 TypeHaus, Inc.
All rights reserved.
(3045-081203A)

For more product or support information contact TypeHaus at 760.334.3555 or visit www.typehaus.com.